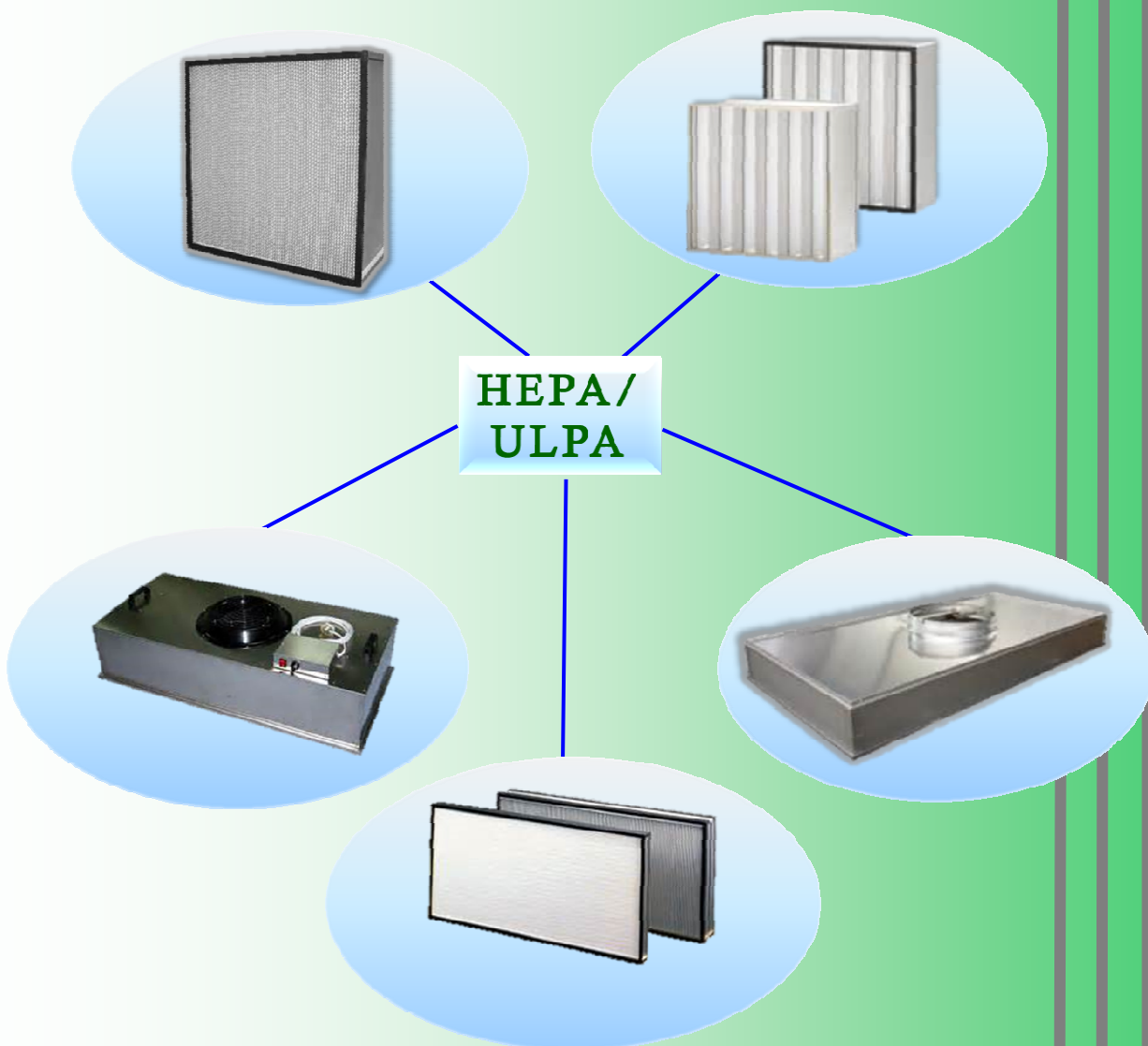


HEPA FILTER:

Euro-PA(EAPA)

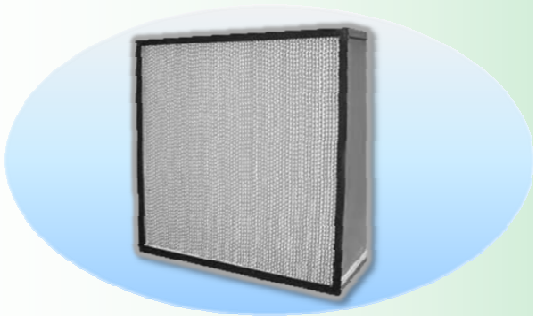
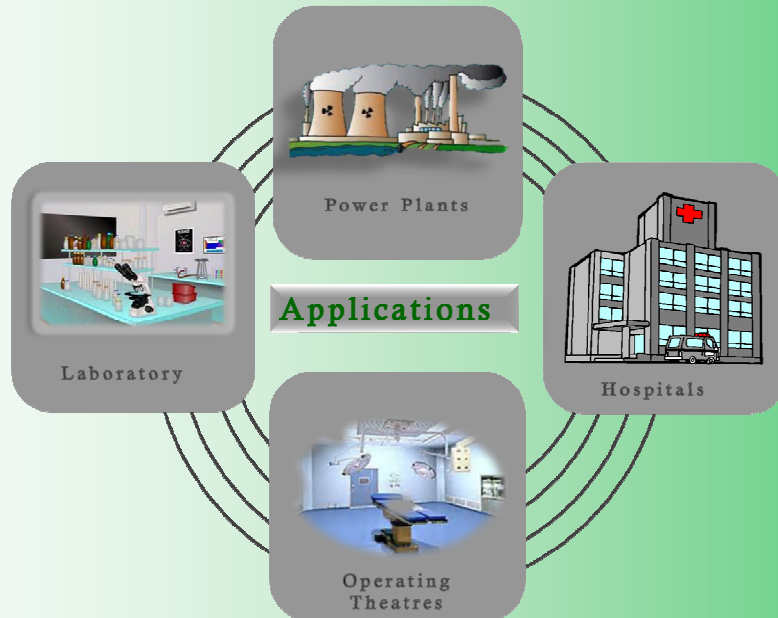
General

Euro-Aire's Euro-Pa HEPA range is the most delicate range of all filters, serving as the final stage of basic filtration. Not only can it effectively filter particles as small as 0.3 micron, it can also filter off smoke and haze particles effectively.



HEPA: High Efficiency Particulate Air

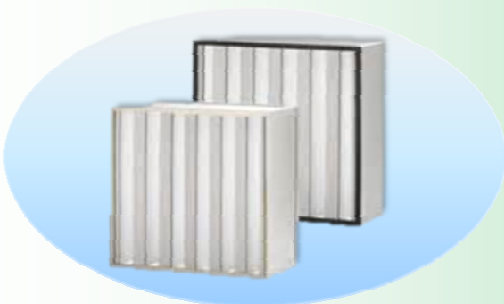
ULPA: Ultra Low Penetration Air



EAPA-SP is a conventional separator-type HEPA, commonly used in High Static Air Handling Units (AHUs). It can be used widely in various applications such as cleanrooms, hospitals, laboratories, etc.

EAPA-SP Standard Construction

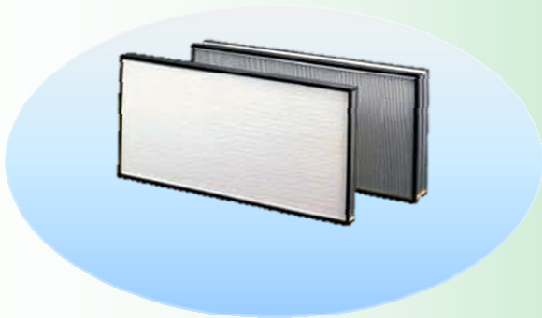
- Casing: GI/Galvalume/Particle Board/Stainless Steel
- Media: Glass-fibre with aluminium separator



EAPA-V is specially designed in V-bank construction to cater for high air volume and variable air volume applications, such as power plants and Air Handling Systems (AHSs). It is designed uniquely for its extraordinary large media area for long lifespan.

EAPA-MP Standard Construction

- Casing: GI/Aluminium/Stainless Steel
- Media: Mini-Pleat Glass-fibre in V-Bank Design



EAPA-MP is often used together with Fan Filter Unit (FFU), Disposable Terminal Module (DTM) or Replaceable Terminal Module (RTM). It is widely used in cleanroom applications as well as hospitals in places such as operating theatres, Intensive Care Unit (ICU), isolation rooms, laboratories, etc.

EAPA-MP Standard Construction

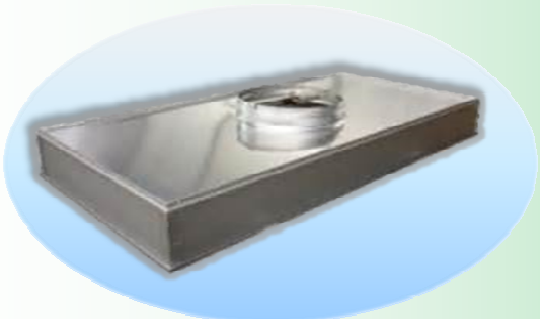
- Casing: Extruded Aluminium
- Media: Mini-Pleat Glass-fibre



EAPA-FFU is commonly used in cleanroom applications, especially for Class 100 and below. It is used extensively in laminar hoods and research centres. It comes with a fan motor in the unit itself, together with a Mini-Pleat HEPA at the bottom of the casing.

EAPA-SP Standard Construction

- Casing: Aluminium/Stainless Steel



EAPA-TM is vastly used in cleanroom and hospital applications. Differ from EAPA-FFU, EAPA-TM does not come with a fan motor in it. As such, the casing profile is much lower. Similarly, EAPA-TM comes with a Mini-Pleat HEPA at the bottom of the casing.

EAPA-MP Standard Construction

- Casing: Extruded Aluminium/Stainless Steel

Construction Code

Range

Efficiency

Series

Size

Frame /
HeaderGasket /
Faceguard

EAPA

-

H13

-

SP

-

4412

-

GS

-

AA



EAPA= Euro-Pa
EAuPa= Euro-
ULPA

E11= 95%
E12= 98%
H13= 99.97%
H13=99.99%
H14= 99.999%
U15= 99.9995
U16= 99.99995%
U17= 99.999995%

SP=EAPA-SP
V=EAPA-V
MP=EAPA-MP
FFU=EAPA-FFU
TM=EAPA-TM

4412=24x24x12"
2412=12x24x12"
4212= 24x12x12"
8412=48x24x12"
4406=24x24x6"
2406=12x24x6"

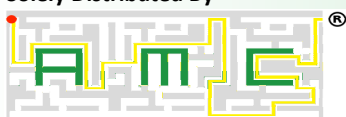
A= Aluminium
G= Galvanised
P= Paper Board
S= Stainless Steel
W= Particle Board
O= Others
D= Double
N= None
S= Single

A= None
B= AES
C= ALS
D= Both Sides
A= None
B= AES
C= ALS
D= Both Sides

Notes:

- ≈ Size refers to orientation of Width x Height x Depth.
- ≈ Size is based on either nominal or exact dimensions.
- ≈ Gasket / Faceguard Location: **AES** refers to Air Entry Side. **ALS** refers to Air Leaving Side.
- ≈ Odd sizes are available upon request. Contact distributor for more information.

Solely Distributed By -


www.airmazecorp.com

Version PA-02