

TM

EURO-AIRE

# Disposable Panel Filters: Euro-Pleat (EAP)

## General

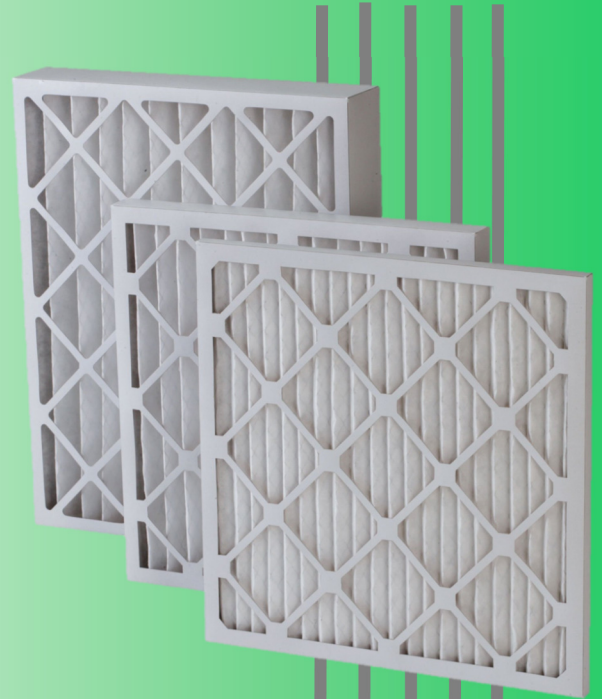
EAP Series is a pleated panel filter commonly used for industrial and commercial applications. It is often used as the first layer of protection, also known as the primary stage. Using synthetic media and highest grade virgin kraft heavy-duty beverage board frame, EAP provides rigidity and high dust holding capacity, with full compliance with EN779 and ASHRAE 52.2 Test Standards.

## Standard Specifications

- Synthetic Media
- Highest Grade Virgin Kraft Heavy-duty Beverage Board
- Metal netted support grid on back of filter
- International shipping packaging
- Comes in 3 different efficiencies (G4, M6, F7) of your choice

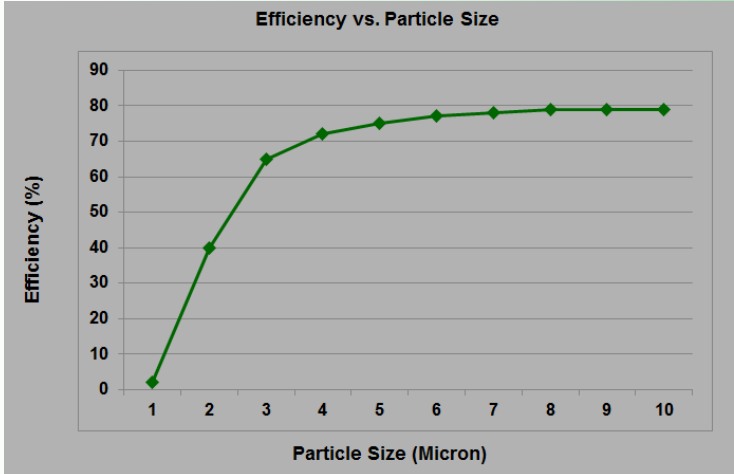
## Efficiency

EN779	ASHRAE 52-76	ASHRAE 52.1	ASHRAE 52.2
G4	> 94%	25%~30%	MERV 8
M6	> 97%	35%~45%	MERV 11
F7	> 99%	80%~85%	MERV 13





## Efficiency vs. Particle Size



Pleat Count	(Pleats Per Linear Foot)		
	1"	2"	4"
Type HC	14.0	14.0	11.0
Type SC	12.0	10.0	8.0
Type EC	8.0	8.0	6.0

## Standard Sizes

Model	Nominal Size (WHD)	Exact Size (WHD)	Initial Resistance (Pa)	Airflow (CMH)
EAP2441-G4-*	24" X 24" X 1"	594 X 594 X 19 MM	62	3400
EAP1241-G4-*	12" X 24" X 1"	289 X 594 X 19 MM	62	1700
EAP2041-G4-*	20" X 24" X 1"	492 X 594 X 19 MM	62	1700
EAP2442-G4-*	24" X 24" X 2"	594 X 594 X 45 MM	65	3400
EAP1242-G4-*	12" X 24" X 2"	289 X 594 X 45 MM	65	1700
EAP2042-G4-*	20" X 24" X 2"	492 X 594 X 45 MM	65	1700
EAP2444-G4-*	24" X 24" X 4"	594 X 594 X 95 MM	47	3400
EAP1244-G4-*	12" X 24" X 4"	289 X 594 X 95 MM	47	1700
EAP2044-G4-*	20" X 24" X 4"	492 X 594 X 95 MM	47	1700

- \*\* refers to capacity. Comes in 3 capacities: High Capacity (HC), Standard Capacity (SC), Economic Capacity (EC)
- Initial Resistance and Airflow stated is based on G4 (MERV 8) efficiency.
- Proposed Final Resistance: 250 pa (optional)
- Size may vary +/- 1-2mm
- Special sizes available upon request

Solely Distributed By -

